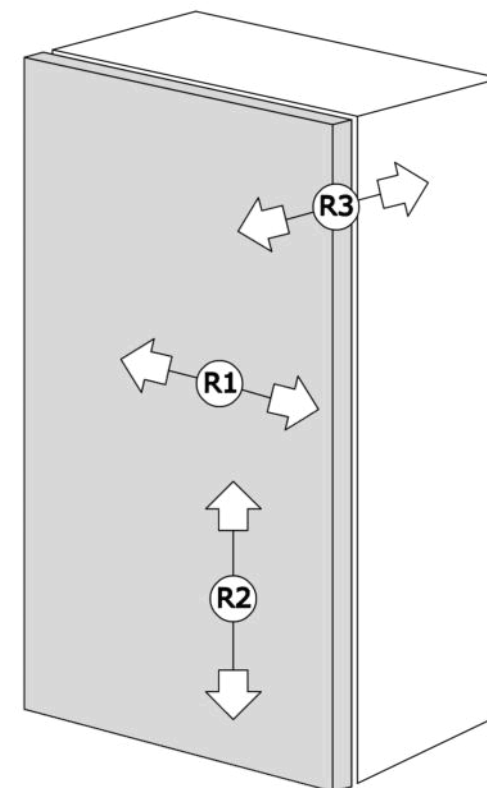
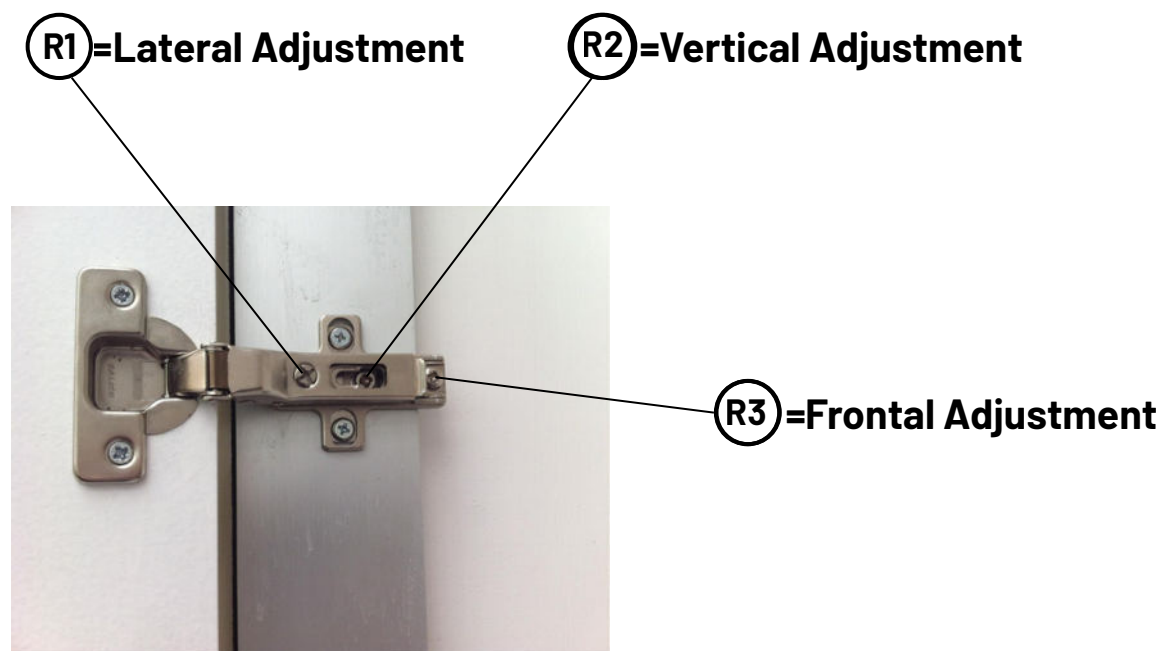


Hinge adjustment instructions for access panels



INSTALLATION INSTRUCTIONS FOR PLASTERBOARD WALLS

INSTALL THE ACCESS PANEL COMPLETE WITH DOORS ALREADY MOUNTED ON THE FRAME, ENSURING PROPER LEVEL AND PLUMB ALIGNMENT IN BOTH DIRECTIONS.

1

THE PLASTERBOARD STRUCTURE MUST FIT FLUSH AGAINST THE FRAME, AS ILLUSTRATED.

2

IF THE PLASTERBOARD WALL HAS ALREADY BEEN CLOSED, PROCEED BY FASTENING FROM THE INSIDE, WORKING THROUGH THE ACCESS OPENINGS (SEE FIG. "A").

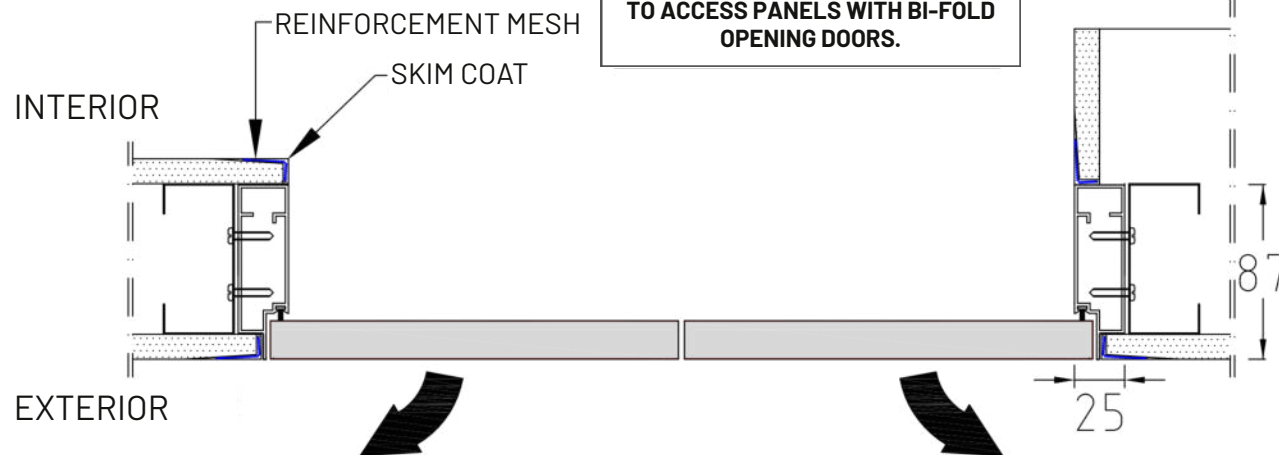
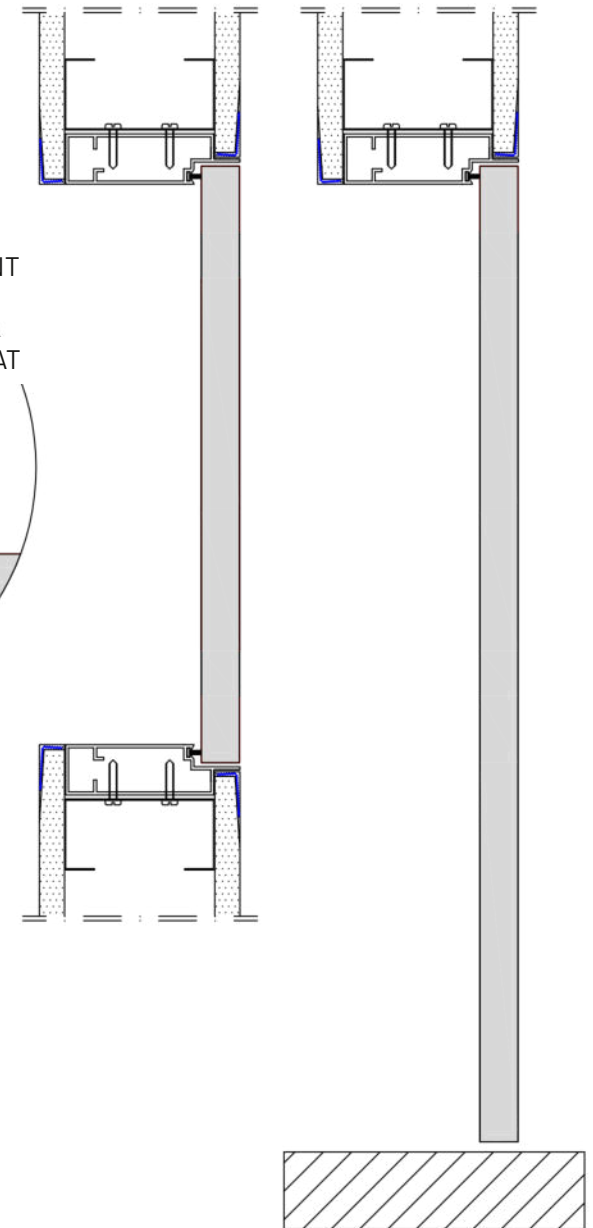
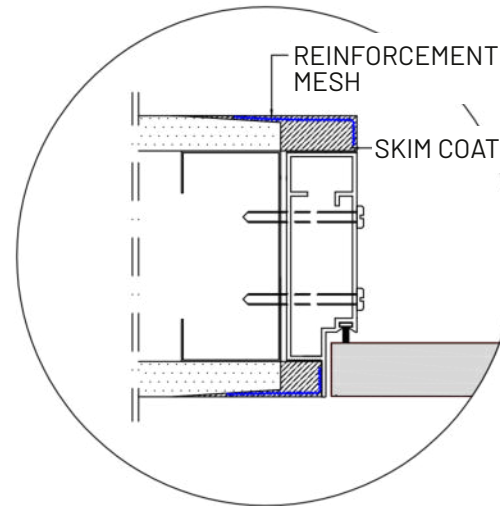
EVEN WITH THE DOORS OPEN, THE FRAME WILL REMAIN SECURELY CONNECTED THANKS TO THE PRE-INSTALLED SPACERS.

IMPORTANT NOTE:

TO MAINTAIN THE PANEL'S PERFECT FLUSH ALIGNMENT WITH THE WALL, THE SAME THICKNESS OF FINISHING LAYER MUST BE APPLIED TO BOTH SIDES OF THE PANEL.

FAILURE TO DO SO MAY RESULT IN DEFORMATION, FOR WHICH NO WARRANTY CLAIMS CAN BE ACCEPTED.

ENLARGED DETAIL "A"



INSTALLATION INSTRUCTIONS FOR MASONRY WALLS

INSTALL THE ACCESS PANEL WITH THE DOOR LEAF ALREADY FITTED INTO THE FRAME, ENSURING CORRECT LEVEL AND PLUMB ALIGNMENT IN BOTH DIRECTIONS.

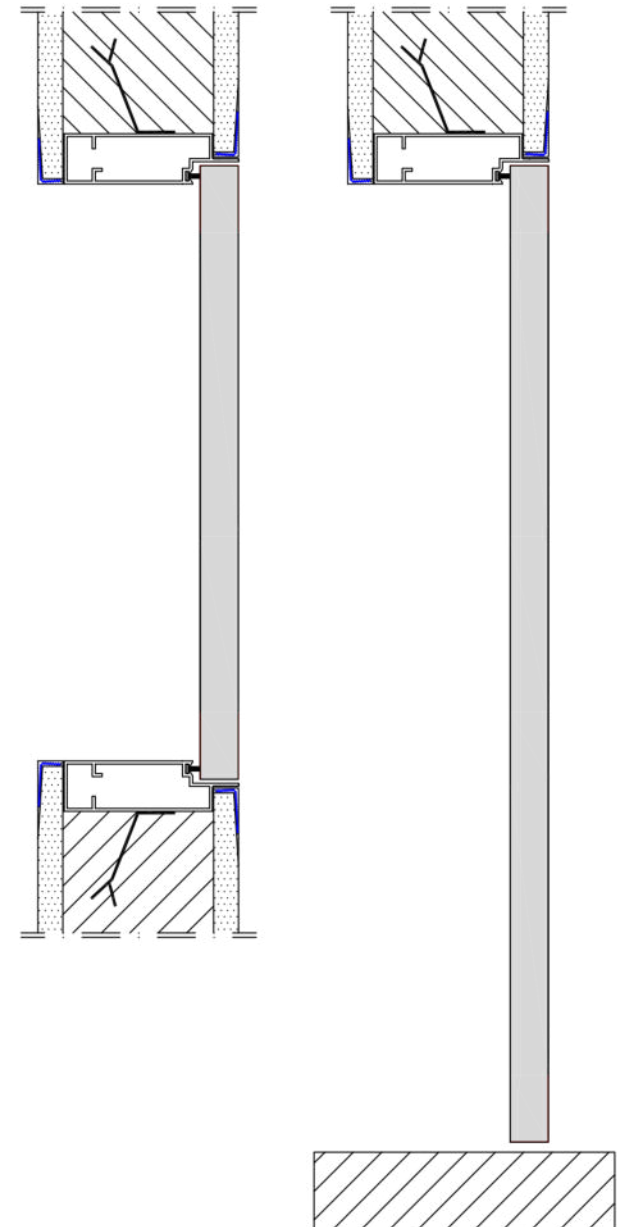
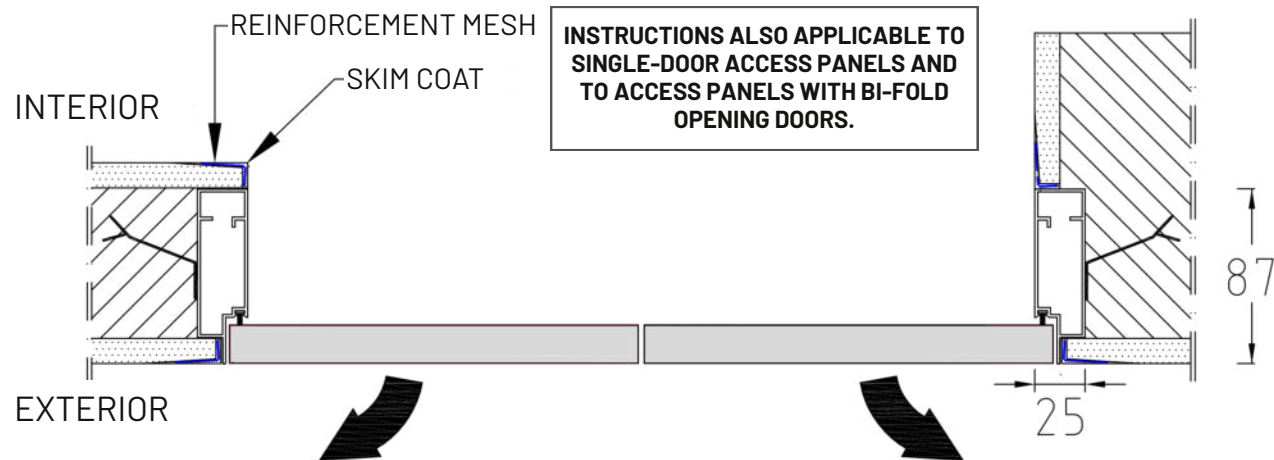
FIX THE FRAME BY MEANS OF THE PRE-INSTALLED ANCHORS EMBEDDED IN THE MASONRY.

APPLY REINFORCEMENT MESH AND CAREFULLY SKIM COAT THE JOINT BETWEEN THE WALL AND THE ALUMINIUM FRAME.

IMPORTANT NOTE:

TO MAINTAIN THE PANEL'S PERFECT FLUSH ALIGNMENT WITH THE WALL, THE SAME THICKNESS OF FINISHING LAYER MUST BE APPLIED TO BOTH SIDES OF THE PANEL.

FAILURE TO DO SO MAY RESULT IN DEFORMATION, FOR WHICH NO WARRANTY CLAIMS CAN BE ACCEPTED.

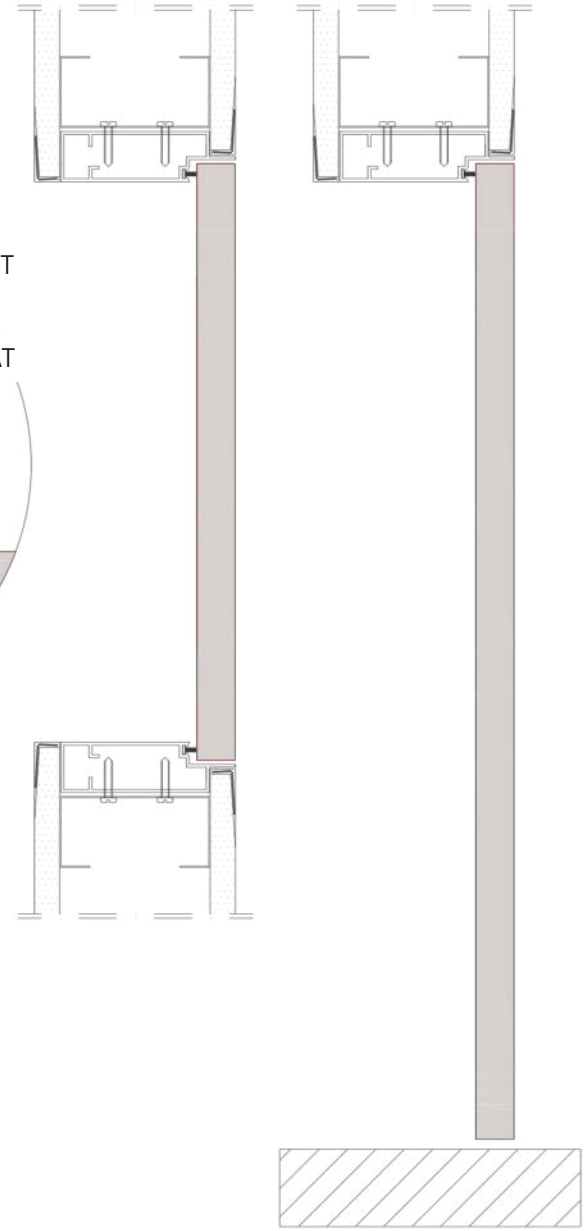


Invisible-door.com

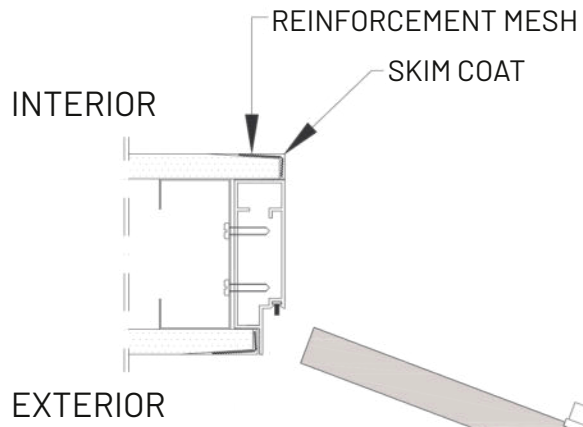
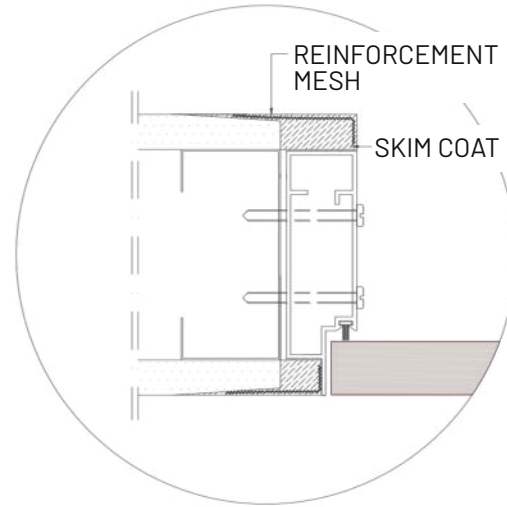
Centro Diffusione Serramenti S.r.l.

Via Roma, 234 - 59100 Prato (PO)

Tel. +39 0574/630094 - Fax +39 0574/635480



ENLARGED DETAIL "A"



**INSTRUCTIONS ALSO APPLICABLE TO
SINGLE-DOOR ACCESS PANELS AND
TO ACCESS PANELS WITH BI-FOLD
OPENING DOORS.**

