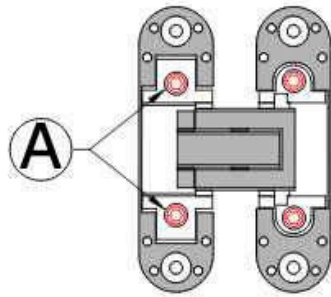
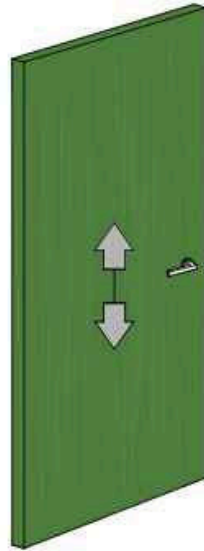


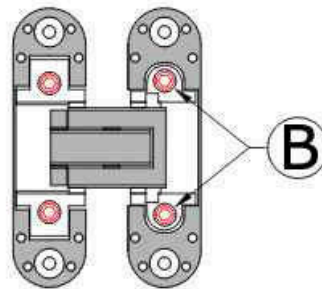
HINGE ADJUSTMENT INSTRUCTIONS



USING ADJUSTMENT SCREWS **A**, VERTICAL ADJUSTMENT OF +2 MM CAN BE ACHIEVED.

BY TIGHTENING THE LOWER SCREW AND LOOSENING THE UPPER ONE, THE DOOR LEAF RISES.

BY LOOSENING THE LOWER SCREW AND TIGHTENING THE UPPER ONE, THE DOOR LEAF LOWERS.



USING ADJUSTMENT SCREWS **B**, BOTH HORIZONTAL ADJUSTMENT ± 1 MM AND LATERAL ADJUSTMENT ± 2 MM CAN BE ACHIEVED.

THE SCREWS CAN BE TIGHTENED OR LOOSENED FOR A TOTAL OF 4 FULL TURNS.

Invisible-door.com

Centro Diffusione Serramenti S.r.l.
Via Roma, 234 - 59100 Prato (PO)
Tel. +39 0574/630094 - Fax +39 0574/635480

**FOR PLASTERBOARD
PUSH OPENING**

IMPORTANT NOTES:

FOR PACKAGING AND TRANSPORT REASONS, THE DOOR IS SUPPLIED PRE-ASSEMBLED.

- 1 HOWEVER, IT IS RECOMMENDED TO CARRY OUT THE INSTALLATION BY FIRST FITTING THE FRAME ONLY, THEREFORE REMOVING THE DOOR LEAF.

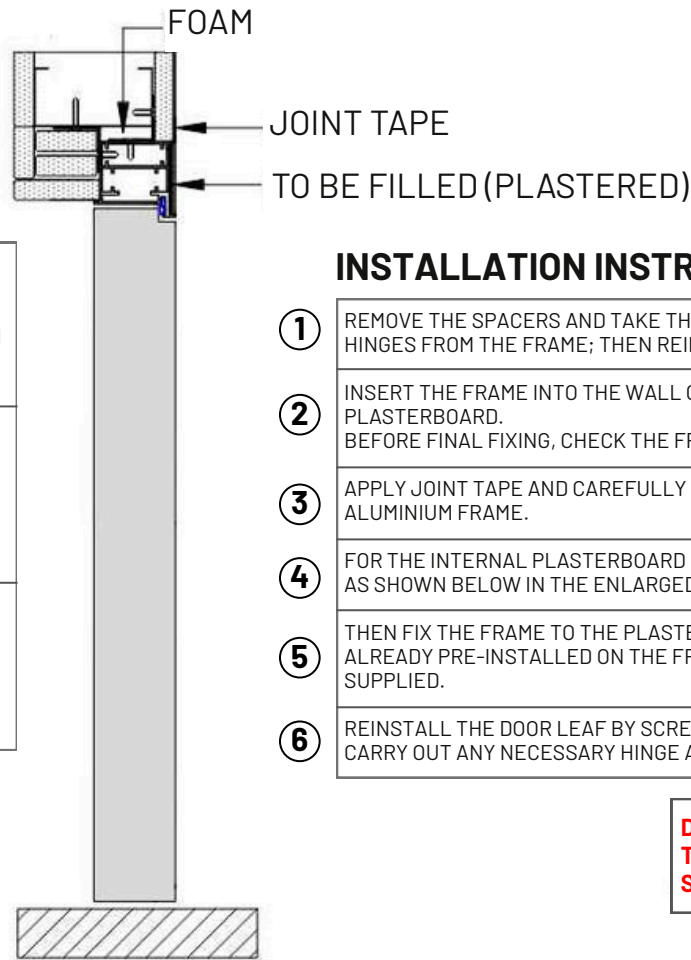
TO MAINTAIN THE PANEL'S COPLANARITY, IT IS RECOMMENDED TO APPLY THE SAME FINISHING TREATMENT ON BOTH SIDES OF THE PANEL.

- 2 OTHERWISE, THE PANEL MAY DEFORM, FOR WHICH NO WARRANTY CLAIM CAN BE ACCEPTED.

- 3 **DO NOT OPERATE THE PRIVACY THUMB TURN WHEN THE DOOR LEAF IS OPEN.
THE MAGNETIC LOCK OPERATES ONLY WHEN THE DOOR LEAF IS IN THE CLOSED (LATCHED) POSITION.**

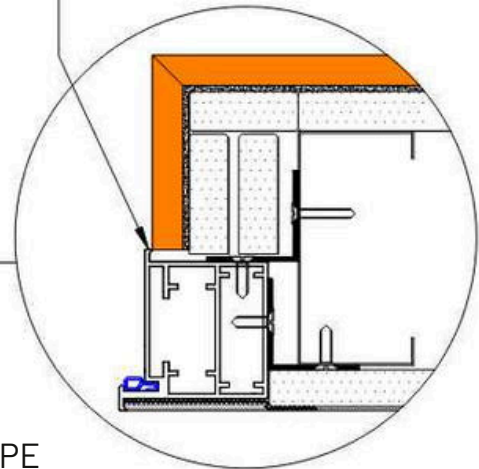
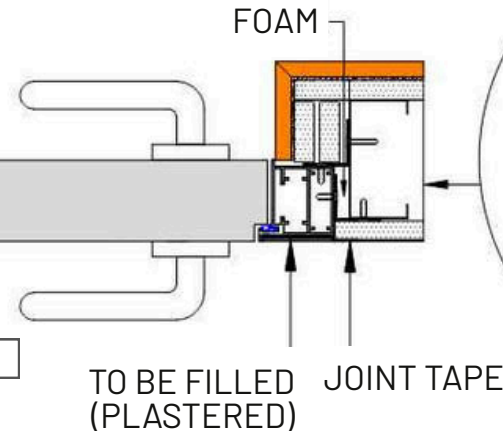
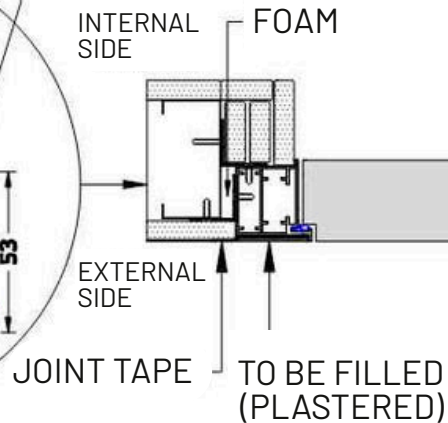
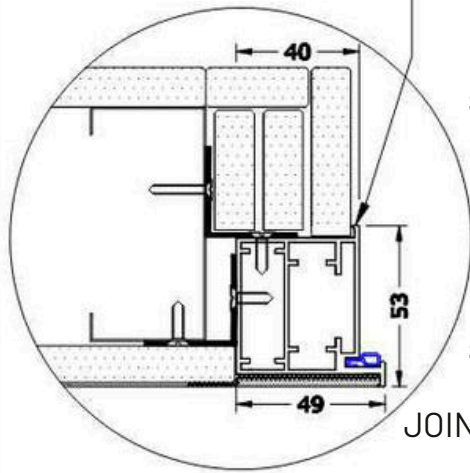
DETAIL WITH FLUSH FINISH TO BE PAINTED, TO BE USED WITHOUT SKIRTING BOARD OR WITH RECESSED SKIRTING BOARD.

DETAIL WITH RECESSED FINISH, ALLOWING THE NECESSARY CLEARANCE FOR SKIRTING BOARD INSTALLATION.



INSTALLATION INSTRUCTIONS

- 1 REMOVE THE SPACERS AND TAKE THE DOOR LEAF OFF ITS HINGES BY UNSCREWING THE HINGES FROM THE FRAME; THEN REINSTALL THE SPACERS.
- 2 INSERT THE FRAME INTO THE WALL OPENING, ENSURING ALIGNMENT WITH THE PLASTERBOARD. BEFORE FINAL FIXING, CHECK THE FRAME FOR PERFECT LEVEL AND PLUMB.
- 3 APPLY JOINT TAPE AND CAREFULLY FILL THE JOINTS BETWEEN THE WALL AND THE ALUMINIUM FRAME.
- 4 FOR THE INTERNAL PLASTERBOARD FINISH, CHOOSE ONE OF THE TWO AVAILABLE SOLUTIONS, AS SHOWN BELOW IN THE ENLARGED SIDE DETAILS.
- 5 THEN FIX THE FRAME TO THE PLASTERBOARD STRUCTURE USING THE FIXING BRACKETS ALREADY PRE-INSTALLED ON THE FRAME, AS WELL AS THE LOOSE 30x30 MM BRACKETS SUPPLIED.
- 6 REINSTALL THE DOOR LEAF BY SCREWING THE HINGES BACK ONTO THE FRAME. CARRY OUT ANY NECESSARY HINGE ADJUSTMENTS (SEE ATTACHED INSTRUCTIONS).

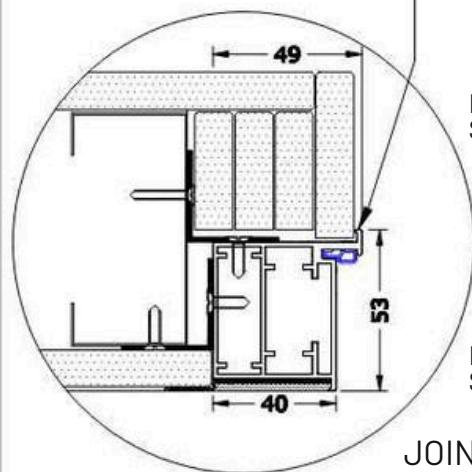


**FOR PLASTERBOARD
PULL OPENING**

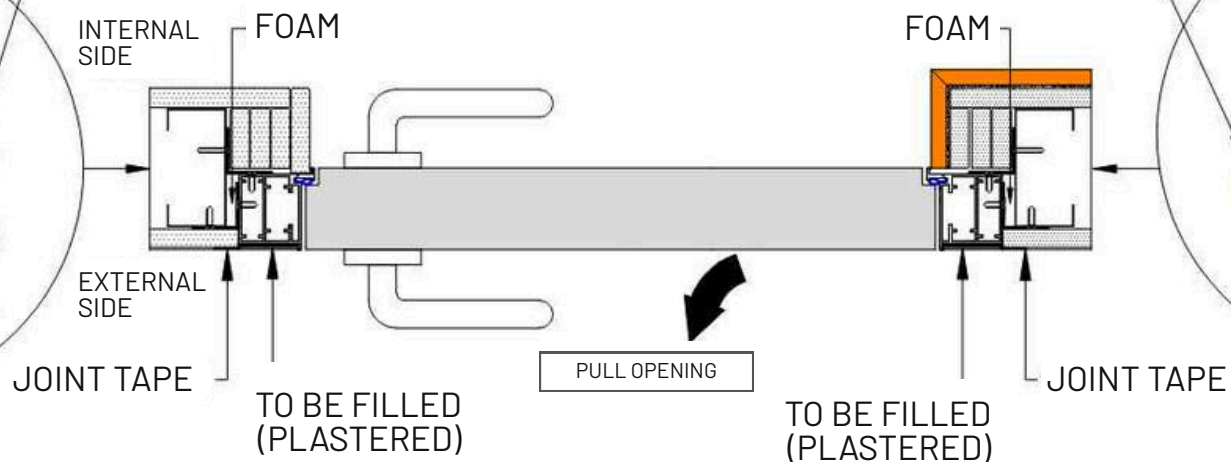
IMPORTANT NOTES:

- 1 FOR PACKAGING AND TRANSPORT REASONS, THE DOOR IS SUPPLIED PRE-ASSEMBLED. HOWEVER, IT IS RECOMMENDED TO CARRY OUT THE INSTALLATION BY FIRST FITTING THE FRAME ONLY, THEREFORE REMOVING THE DOOR LEAF.
- 2 TO MAINTAIN THE PANEL'S COPLANARITY, IT IS RECOMMENDED TO APPLY THE SAME FINISHING TREATMENT ON BOTH SIDES OF THE PANEL.
OTHERWISE, THE PANEL MAY DEFORM, FOR WHICH NO WARRANTY CLAIM CAN BE ACCEPTED.
- 3 **DO NOT OPERATE THE PRIVACY THUMB TURN WHEN THE DOOR LEAF IS OPEN.
THE MAGNETIC LOCK OPERATES ONLY WHEN THE DOOR LEAF IS IN THE CLOSED (LATCHED) POSITION.**

DETAIL WITH FLUSH FINISH, SUITABLE FOR USE WITHOUT A SKIRTING BOARD OR WITH A RECESSED SKIRTING BOARD.

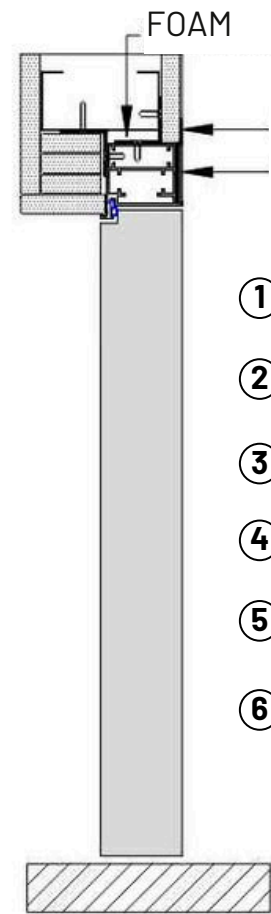


DETAIL WITH RECESSED FINISH, PROVIDING THE REQUIRED CLEARANCE FOR SKIRTING BOARD INSTALLATION.



INSTALLATION INSTRUCTIONS

- 1 REMOVE THE SPACERS AND TAKE THE DOOR LEAF OFF ITS HINGES BY UNSCREWING THE HINGES FROM THE FRAME; THEN REINSTALL THE SPACERS.
- 2 INSERT THE FRAME INTO THE WALL OPENING, ENSURING ALIGNMENT WITH THE PLASTERBOARD. BEFORE FINAL FIXING, CHECK THE FRAME FOR PERFECT LEVEL AND PLUMB.
- 3 APPLY JOINT TAPE AND CAREFULLY FILL THE JOINTS BETWEEN THE WALL AND THE ALUMINIUM FRAME.
- 4 FOR THE INTERNAL PLASTERBOARD FINISH, CHOOSE ONE OF THE TWO AVAILABLE SOLUTIONS, AS SHOWN BELOW IN THE ENLARGED SIDE DETAILS.
- 5 THEN FIX THE FRAME TO THE PLASTERBOARD STRUCTURE USING THE FIXING BRACKETS ALREADY PRE-INSTALLED ON THE FRAME, AS WELL AS THE LOOSE 30*30 MM BRACKETS SUPPLIED.
- 6 REINSTALL THE DOOR LEAF BY SCREWING THE HINGES BACK ONTO THE FRAME. CARRY OUT ANY NECESSARY HINGE ADJUSTMENTS (SEE ATTACHED INSTRUCTIONS).



**FOR MASONRY
PUSH OPENING**

IMPORTANT NOTES:

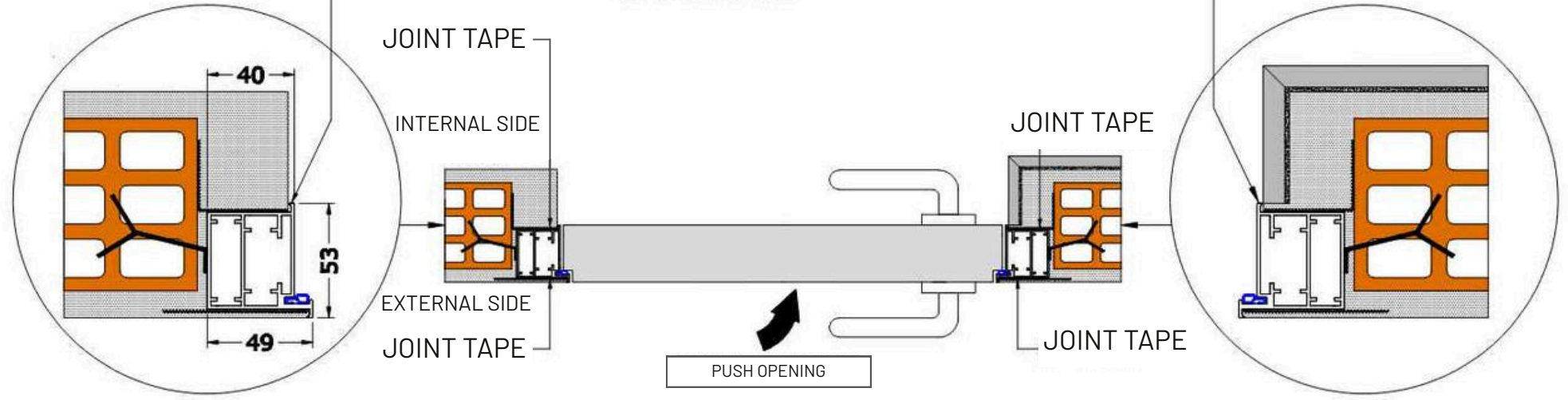
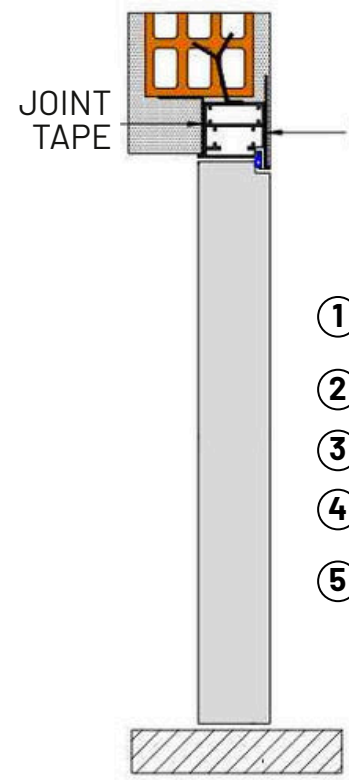
- ① FOR PACKAGING AND TRANSPORT REASONS, THE DOOR IS SUPPLIED PRE-ASSEMBLED. HOWEVER, IT IS RECOMMENDED TO CARRY OUT THE INSTALLATION BY FIRST FITTING THE FRAME ONLY, THEREFORE REMOVING THE DOOR LEAF.
- ② TO MAINTAIN THE PANEL'S COPLANARITY, IT IS RECOMMENDED TO APPLY THE SAME FINISHING TREATMENT ON BOTH SIDES OF THE PANEL. OTHERWISE, THE PANEL MAY DEFORM, FOR WHICH NO WARRANTY CLAIM CAN BE ACCEPTED.
- ③ **DO NOT OPERATE THE PRIVACY THUMB TURN WHEN THE DOOR LEAF IS OPEN. THE MAGNETIC LOCK OPERATES ONLY WHEN THE DOOR LEAF IS FULLY CLOSED AGAINST THE FRAME.**

INSTALLATION INSTRUCTIONS

- ① REMOVE THE SPACERS AND DETACH THE DOOR LEAF BY UNSCREWING THE HINGES FROM THE FRAME; THEN REMOVE THE SPACERS.
- ② INSTALL THE FRAME BY POSITIONING IT AT THE FINISHED FLOOR LEVEL, ENSURING IT IS PLUMB ON BOTH SIDES AND ALIGNED FLUSH WITH THE FINISHED WALL SURFACE.
- ③ FILL AND FINISH THE JOINT BETWEEN THE WALL AND THE ALUMINIUM FRAME.
- ④ FOR THE INTERNAL SIDE PLASTER FINISH, SELECT ONE OF THE TWO SOLUTIONS SHOWN BELOW IN THE ENLARGED SIDE DETAILS.
- ⑤ REINSTALL THE DOOR LEAF BY SCREWING THE HINGES BACK ONTO THE FRAME. PERFORM ANY NECESSARY HINGE ADJUSTMENTS (SEE ATTACHED INSTRUCTIONS)

FLUSH FINISH DETAIL TO BE USED IN THE ABSENCE OF A SKIRTING BOARD OR WITH A RECESSED SKIRTING BOARD.

RECESSED FINISH DETAIL TO PROVIDE THE REQUIRED CLEARANCE FOR THE INSTALLATION OF THE SKIRTING BOARD.



**FOR MASONRY
PULL OPENING**

IMPORTANT NOTES:

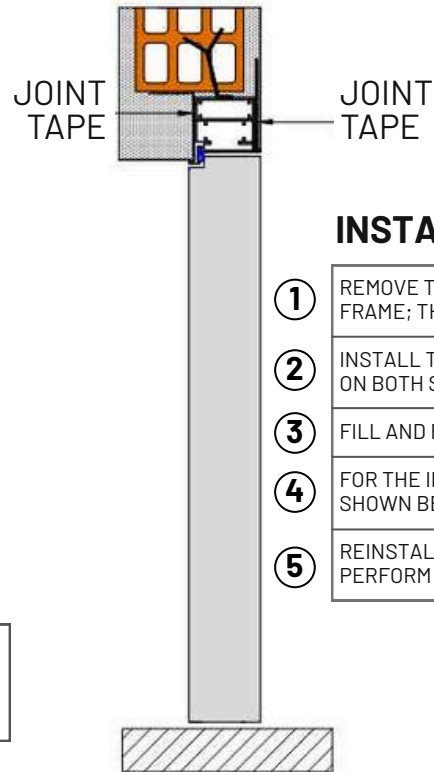
FOR PACKAGING AND TRANSPORT REASONS, THE DOOR IS SUPPLIED PRE-ASSEMBLED.

① HOWEVER, IT IS RECOMMENDED TO CARRY OUT THE INSTALLATION BY FIRST FITTING THE FRAME ONLY, THEREFORE REMOVING THE DOOR LEAF.

② TO MAINTAIN THE PANEL'S COPLANARITY, IT IS RECOMMENDED TO APPLY THE SAME FINISHING

TREATMENT ON BOTH SIDES OF THE PANEL. OTHERWISE, THE PANEL MAY DEFORM, FOR WHICH NO WARRANTY CLAIM CAN BE ACCEPTED.

③ **DO NOT OPERATE THE PRIVACY THUMB TURN WHEN THE DOOR LEAF IS OPEN.**
THE MAGNETIC LOCK OPERATES ONLY WHEN THE DOOR LEAF IS FULLY CLOSED AGAINST THE FRAME.

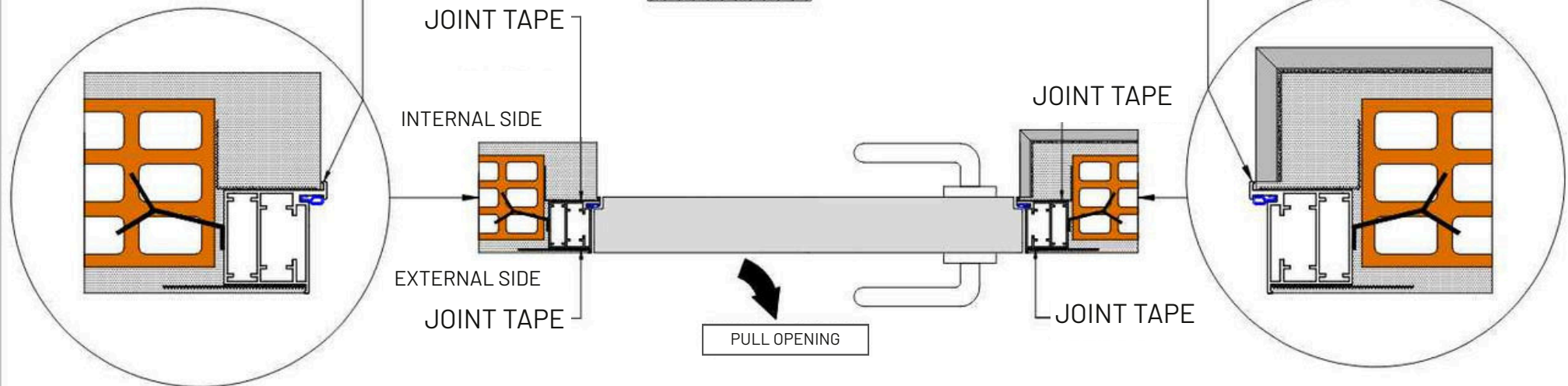


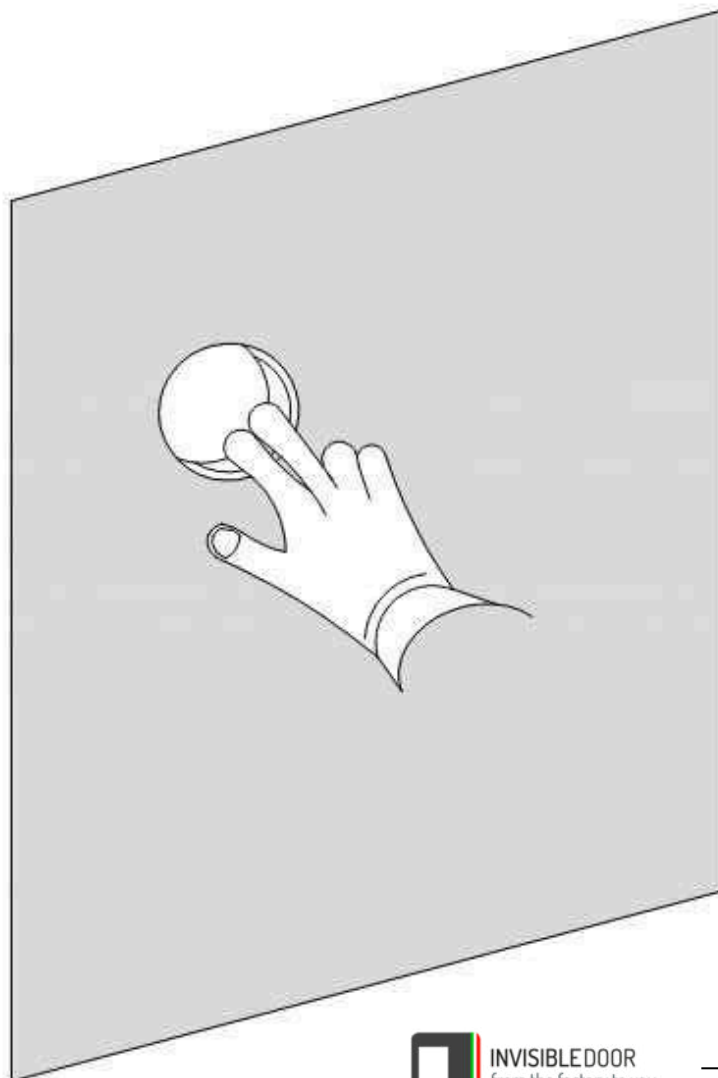
INSTALLATION INSTRUCTIONS

- ① REMOVE THE SPACERS AND DETACH THE DOOR LEAF BY UNSCREWING THE HINGES FROM THE FRAME; THEN REINSTALL THE SPACERS.
- ② INSTALL THE FRAME BY POSITIONING IT AT THE FINISHED FLOOR LEVEL, ENSURING IT IS PLUMB ON BOTH SIDES AND ALIGNED FLUSH WITH THE FINISHED WALL SURFACE.
- ③ FILL AND FINISH THE JOINTS BETWEEN THE WALL AND THE ALUMINIUM FRAME.
- ④ FOR THE INTERNAL SIDE PLASTER FINISH, SELECT ONE OF THE TWO SOLUTIONS PROVIDED, AS SHOWN BELOW IN THE ENLARGED SIDE DETAILS.
- ⑤ REINSTALL THE DOOR LEAF BY SCREWING THE HINGES BACK ONTO THE FRAME. PERFORM ANY NECESSARY HINGE ADJUSTMENTS (SEE ATTACHED INSTRUCTIONS).

**FLUSH FINISH DETAIL TO BE USED
IN THE ABSENCE OF A SKIRTING BOARD
OR WITH A RECESSED SKIRTING BOARD.**

**RECESSED FINISH DETAIL TO CREATE THE
REQUIRED CLEARANCE FOR THE
INSTALLATION OF THE SKIRTING BOARD.**





IMPORTANT NOTES:

TO ENSURE CORRECT DOOR OPERATION, **DURING THE PUSH OPENING PHASE**, PRESS THE LATCH WITH YOUR FINGERS WHILE SLIGHTLY PULLING THE DOOR LEAF TOWARDS YOU, SO THAT THE LOCK LATCH IS NOT FORCED, MAKING THE OPENING OPERATION SMOOTHER.